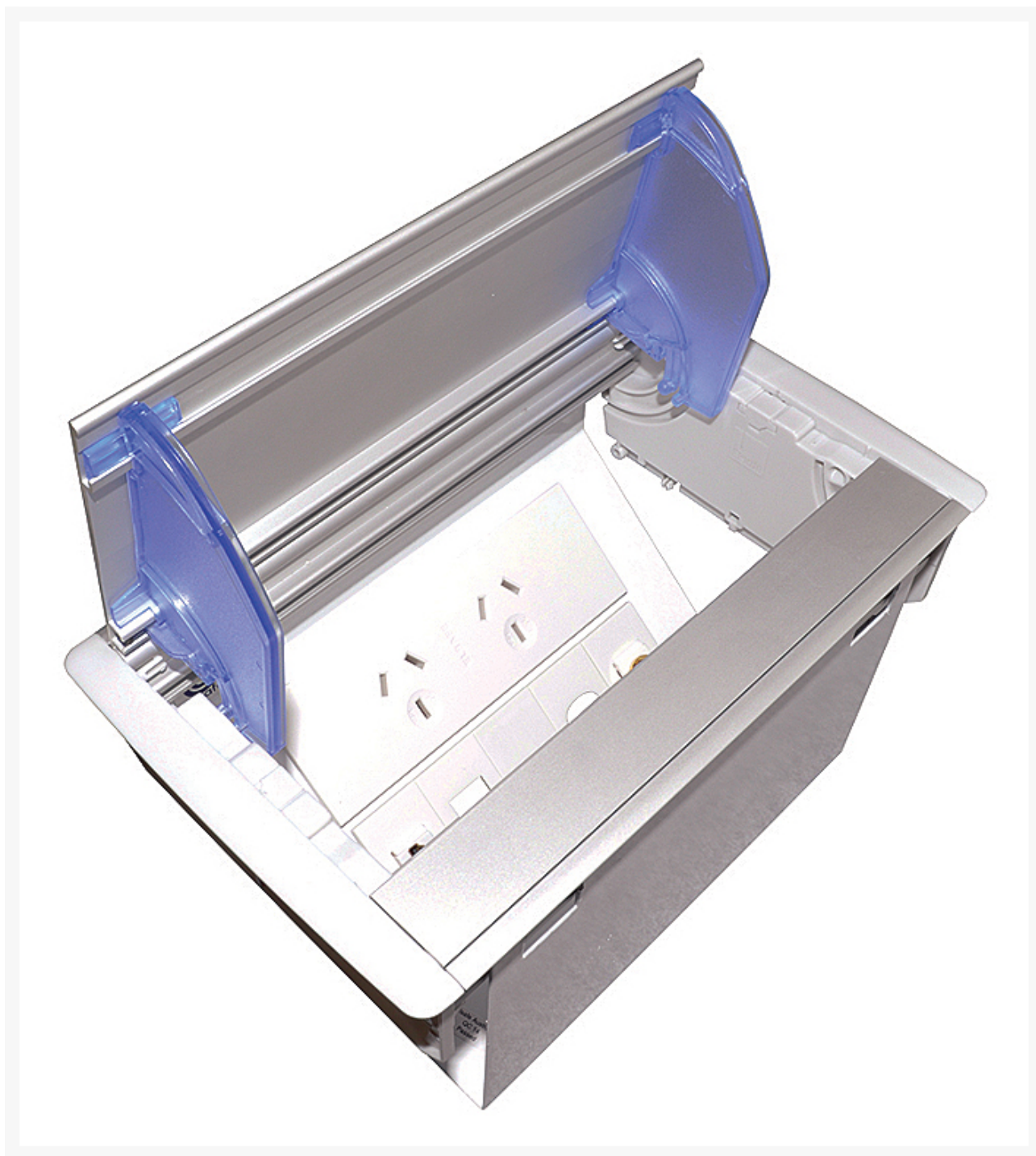




OE Elsafe: Axxess QF25 - 2 GPO / 4 x Data Cutouts Anodised Lid - Grey/Silver

Product Images



Description

The AXCESS series in-desk box has been designed to provide a stylish, contemporary and practical power, data and AV solution. It is the ideal solution to provide Power, Data and AV to your desktop, workstation or boardroom table. The unique design of the AXCESS also allows cables to be stored within the unit when not in use. Data plates can be snipped out to accept various configurations.

Features

- Cable Guides prevent cables from being damaged
- AXCESS Chassis units can be banked together added length.
- Chassis comes with 4 x 25.4mm data cutouts*.
- Plate with data cutouts can be removed to accommodate quikfit (QF) tiles either:
 - 5 x [QF5 tiles](#) or
 - [2GPO](#) & QF
- Reinforced insulation.

100% testing-continuity, polarity, insulation & earth.

Specs

- Material: Anodised Lid
- Ports: 4 x GPO, 4 x Data Cutouts*
- Colour: Grey/Silver
- Dimensions: 221mm x 138mm x 125mm

*Each Data cutout requires a [Data Bezel](#) to be able to suite CLIPSAL compatible inserts.

Warranty

1 year limited warranty.

