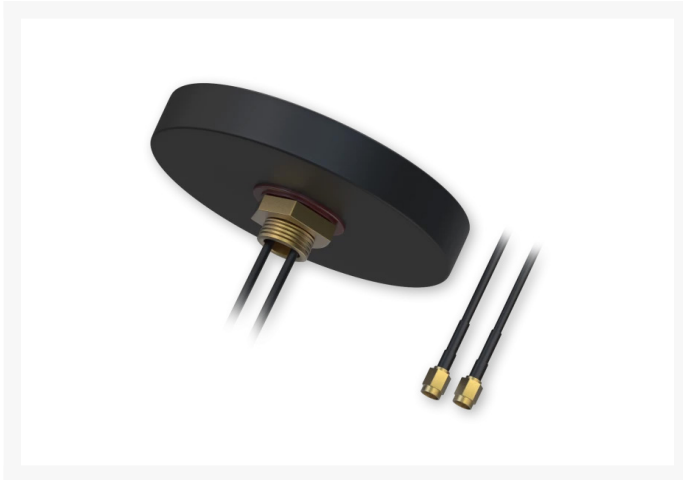
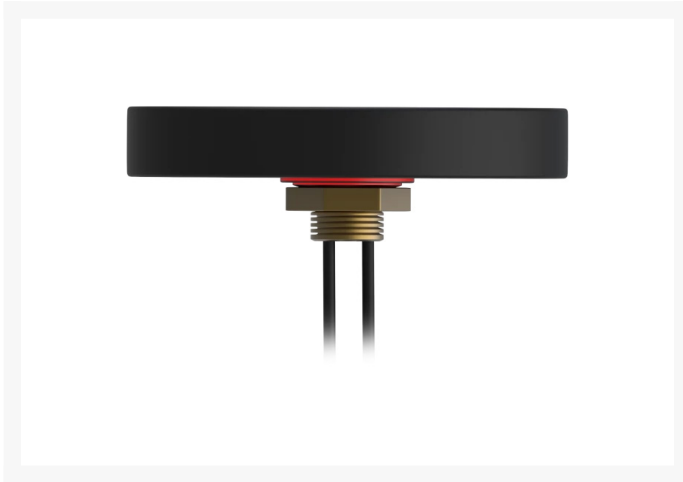




Teltonika | PR1KCL25 | Combo MIMO Flush Mount Mobile Antenna for Vehicle/Cabinet

Product Images



Description

Teltonika | PR1KCL25 | Combo MIMO Flush Mount Mobile Antenna for Vehicle/Cabinet | Suitable for RUTxxx with only 2 inputs for MIMO: RUT2xx, RUT9xx, RUT360, RUTX09, RUTX11, RUTX12, RUTX14, RUTXR1

Experience unparalleled wireless connectivity with the Teltonika PR1KCL25 Combo MIMO Flush Mount Mobile Antenna. Designed specifically for [RUT240AU](#), [RUT241](#), [RUT360](#), [RUT950AU](#), [RUT951](#), [RUT955AU](#), [RUT956](#), [RUTX09](#), [RUTX11](#), [RUTX12](#), [RUTX14](#), [RUTXR1](#) devices, this antenna features dual inputs for MIMO, allowing for simultaneous data transmission and reception. With a frequency range of 698 ~ 960 and 1710 ~ 2690 MHz, this antenna ensures compatibility with a wide range of networks, keeping you connected wherever you go.

Equipped with a linear polarization design, the antenna delivers exceptional signal reception and transmission with its main antenna gain of 2.5 dBi and the aux antenna gain of 2.0 dBi. Its VSWR of 3.0 and impedance of 50 Ω minimize signal loss, providing a reliable and stable connection. The screw mounting method and compact housing dimensions make installation effortless, while the radome material and IP65 ingress protection rating ensure durability and resistance to dust and water. Enhance your wireless performance with the Teltonika PR1KCL25 Combo MIMO Flush Mount Mobile Antenna and enjoy seamless connectivity in any environment.

SPECIFICATIONS

- **Frequency range:** 698 ~ 960, 1710 ~ 2690 MHz
- **Polarization:** Linear
- **Main antenna gain:** 2.5 dBi
- **Aux antenna gain:** 2.0 dBi
- **VSWR:** 3.0
- **Impedance:** 50 Ω
- **Connector type:** SMA Male
- **Mounting method:** Screw
- **Radome ingress protection rating:** IP65
- **Radome material:** Black ABS
- **Housing dimensions:** Ø 80 x 15 mm
- **Cable:** 2x RG174, 3000 mm
- **Weight:** 250g
- **RoHS compliant:** ✓

WARRANTY

2-years limited warranty

