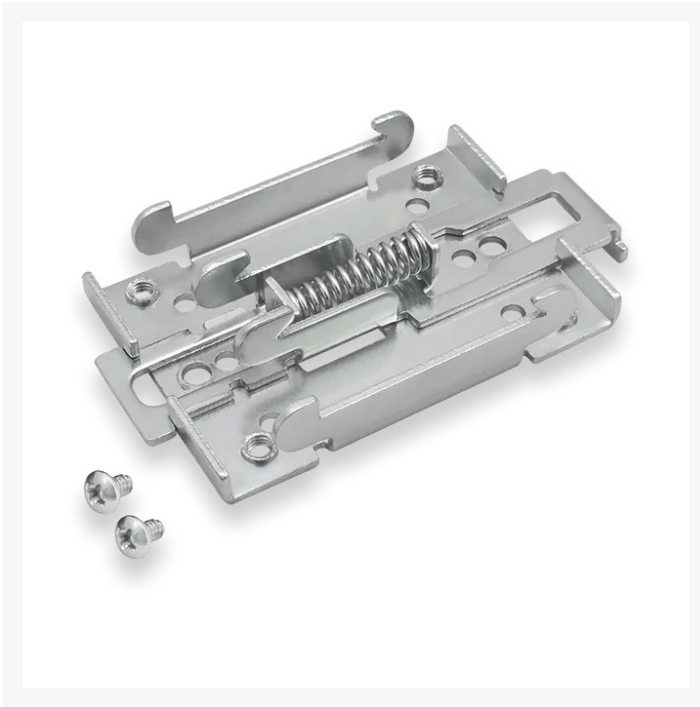




## Teltonika | PR5MEC00 | Large DIN Rail Kit

### Product Images



# Teltonika | PR5MEC00 | Large DIN Rail Kit | Suitable for RUT2xx, RUT9xx, RUT3xx, RUTXxx, TRB14x, TRB24x, TRB500, TRM2xx, TSW100, TSW101, TSW110, TSW2xx

The PR5MEC00 mounts allow you to mount either [RUT240](#), [RUT241](#), [RUT950](#), [RUT951](#), [RUT955](#), [RUT956](#), [RUT300](#), [RUT360](#), [RUTX08](#), [RUTX09](#), [RUTX10](#), [RUTX11](#), [RUTX12](#), [RUTX14](#), [RUTX50](#), [TRB140](#), [TRB141](#), [TRB142](#), [TRB145](#), [TRB245](#), [TRB500](#), [TRM240](#), [TRM250](#), [TSW100](#), [TSW101](#), [TSW110](#), [TSW200](#) or [TSW210](#) Teltonika models to a 35mm DIN rail

## SPECIFICATIONS

- **Mounting standard:** 35mm DIN Rail
- **Material:** Low carbon steel
- **Weight:** 57g
- **Dimensions:** 82 mm x 46 mm x 20 mm
- **RoHS Compliant:** Yes

## CONTENTS

- Screws included Philips Pan Head screw #6-32×3/16, 2pcs

## WARRANTY

2-years limited warranty

