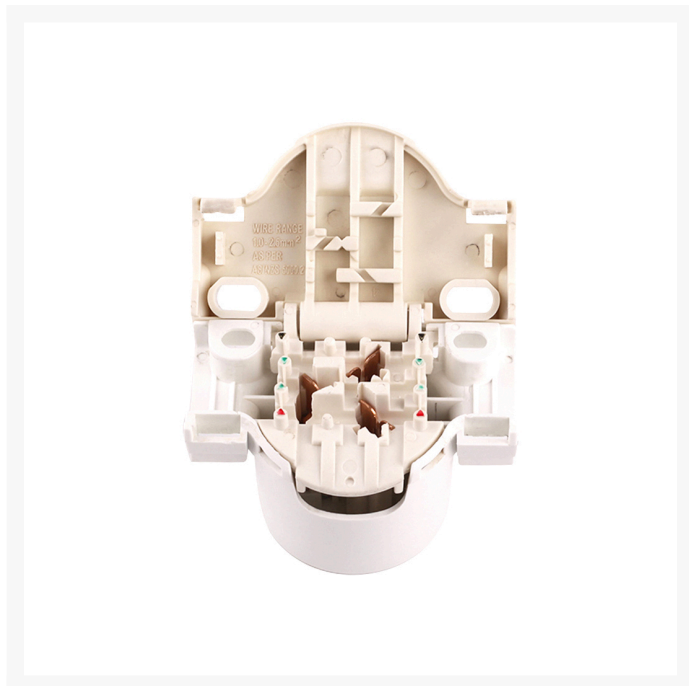




4C | Quick Connect Surface Socket 10A - 10 Pack

Product Images



4C | Quick Connect Surface Socket 10A - 10 pack

The 4Cabling Industrial Quick Connect Surface Socket is suitable for use in commercial and domestic lighting installations.

APPLICATION

Suitable for use in commercial and domestic lighting installations

FEATURES

- Available in 250V 10A
- Suitable for use with 1.00mm, 1.5mm and 2.5mm Flat TPS cables
 - **Note:** Do not use TPS cables outside of this range
- Allows for quick assembly of cables without the use of tools

SPECIFICATIONS

QUANTITY IN PACK	10
DIMENSIONS H x W	70 x 50mm
MATERIAL	Polycarbonate
SUITABLE CABLES	1.00mm, 1.5mm and 2.5mm Flat TPS cables
SUPPLY VOLTAGE	250V 10A
COMPLIANCE	AS/NZS 3112:2011 Inc A1 - 3 AS/NZS 3100:2009 Inc A1 - 4
WARRANTY	3 Years

WHY 4CABLING?

- 100% Aussie Owned and Operated
- Expert Advice and Sales Team
- Trusted by Over 100,000 Aussie Customers
- ISO 9001, NSW & QLD Government Approved Supplier
- Massive Stock Levels, Ready to Go
- Lightning Fast Delivery Nationwide
- Warranty & Easy Return Policy
- Secure Online Shopping 24/7

