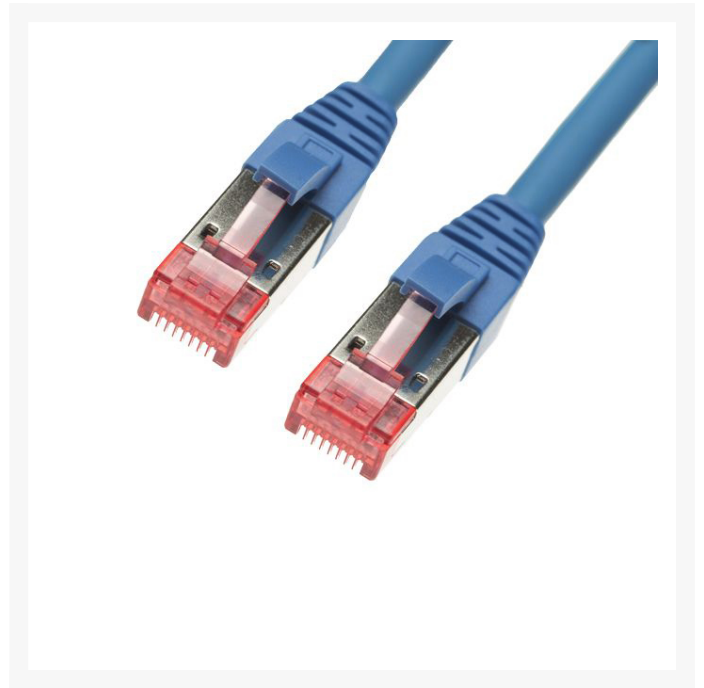




10m CAT6A S/FTP LSZH Ethernet Network Cable | Blue

Product Images



Description

4Cabling's range of quality category 6A Ethernet Patch Leads are made from 100% Bare Copper. They are designed to be used in high data transmission and mission critical situations where data integrity and transfer speeds are of the utmost importance such as data centres.

4Cabling offers this quality range Cat 6A patch cords in a variety of colours and lengths to satisfy all your cabling requirements.

CABLE SPECIFICATIONS

- **Cable Type:** Cat 6A S/FTP
- **Connectors:** RJ45-RJ45
- **Length:** 10m
- **Colour:** Blue
- **Jacket Material:** LSZH
- **Diameter:** 6.2mm

FEATURES

- 100% Copper Ethernet Cable
- Suitable for shielded and unshielded UTP sites
- 8 multi-strand conductors in 4 twisted-pair T568A colour-coded configuration.
- Fitted with 50µ³ Category 6A compliant 2-row (staggered pin) plug
- Superior performance for PoE applications to 100W

- Low Smoke Zero Halogen (LSZH) reduces the amount of corrosive and toxic gases emitted during combustion
- Fully molded strain-relief boot
- Low-profile flush moulded boots
- Strong and robust male-to-male RJ45 connectors
- 3 Year Warranty

CERTIFICATIONS

- ETL Verified
- UL Verified
- Performs at 500MHz
- ISO/IEC11801:2011(Ed. 2.2)
- ANSI/TIA/EIA-568-C.2 Category 6A compliant
- EN 50173-1:2011
- EN 50173-2:2007 including amendment A1:2010
- IEC61935-2:2010(Ed.3.0) (transmission requirements)

WHY 4CABLING?

- Australia's leading importer & wholesaler of 19" server racks, ethernet cables, copper, fibre & structured networking products
- ISO 9001, NSW Govt. & GITC (QLD Govt.) approved supplier
- Secure online shopping 24/7
- A loyal customer base of 100k+ who trust us for their data & electrical needs
- Over 3000 quality products in stock ready to go
- All products are approved as per local Australian standards
- Warranty & peace of mind return policy
- Lightning fast delivery nationwide
- Expert advice
- Proudly 100% Australian owned & operated

