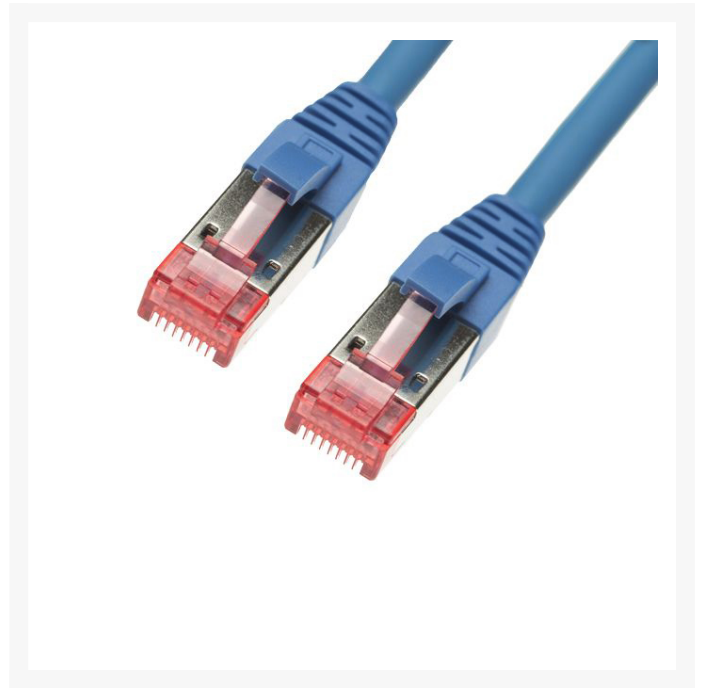




## 5m CAT6A S/FTP LSZH Ethernet Network Cable | Blue

### Product Images



### Description

## 5m CAT6A S/FTP LSZH Ethernet Network Cable | Blue

4Cabling's range of quality category 6A Ethernet Patch Leads are made from 100% Bare Copper. They are designed to be used in high data transmission and mission critical situations where data integrity and transfer speeds are of the utmost importance such as data centres.

4Cabling offers this quality range of CAT6A patch cords in a variety of colours and lengths to satisfy all your cabling requirements.

## FEATURES

- 100% Copper Ethernet Cable
- Suitable for shielded and unshielded UTP sites
- 8 multi-strand conductors in 4 twisted-pair T568A colour-coded configuration.
- Fitted with 50µm Category 6A compliant 2-row (staggered pin) plug
- Snag Free Boots prevent cable kinks and bent pins when removing them from patch panels
- Superior performance for PoE applications to 100W

- Low Smoke Zero Halogen (LSZH/LSOH) reduces the amount of corrosive and toxic gases emitted during combustion
- Fully molded strain-relief boot
- Low-profile flush moulded boots
- Strong and robust male-to-male RJ45 connectors

## SPECIFICATIONS

- **Cable Type:** CAT6A S/FTP
- **Connectors:** RJ45-RJ45
- **Length:** 5m
- **Colour:** Blue
- **Jacket Material:** LSZH
- **Diameter:** 6.2mm

## CERTIFICATIONS

- ETL Verified
- UL Verified
- Performs at 500MHz
- ISO/IEC11801:2011(Ed. 2.2)
- ANSI/TIA/EIA-568-C.2 Category 6A compliant
- EN 50173-1:2011
- EN 50173-2:2007 including amendment A1:2010
- IEC61935-2:2010(Ed.3.0) (transmission requirements)

## WARRANTY

3-years limited warranty

