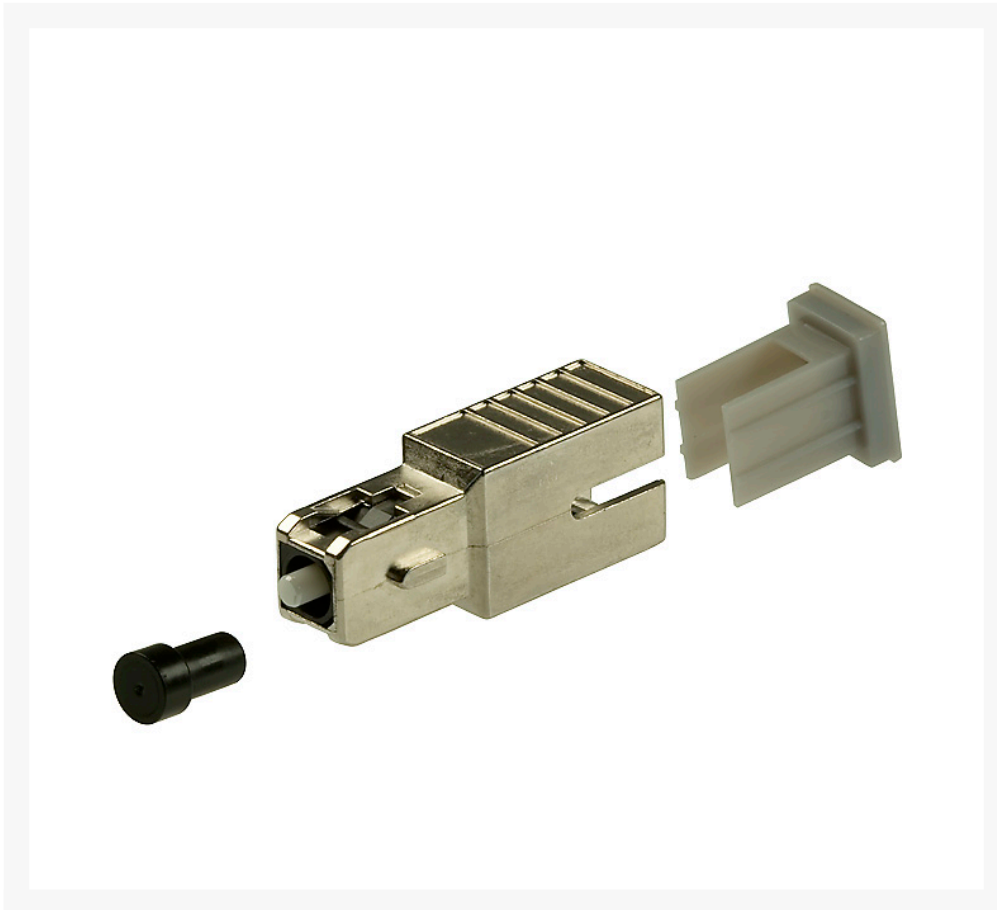




## SC SM M to F/M Attenuator 15dB

### Product Images

---



### Description

---

# SC SM M to F/M Attenuator 15dB

Our LC fiber optic attenuators can provide a stable attenuation from 1 to 20dB at both 1310nm and 1550nm transmission windows. The plug type of this attenuator is male-to-female. Our LC fiber optic attenuator features excellent performance and is compliant with IEC 60869-1 and is fully compatible with all LC/UPC connectors and adaptors.

## Specifications:

- Characteristics : Single-mode (9/125 $\mu$ m)
- Operating Wavelength : 860, 1310nm, 1550nm
- Return loss (UPC) :  $\geq$  55dB
- Attenuation Accuracy :  $\pm$  10%dB
- Operating Temperature : -20 - +75 $^{\circ}$ C
- Storage Temperature : -40 - +75 $^{\circ}$ C
- Mating Durability :  $\geq$  1000 cycle
- Body Dimension(mm) L x W x H : 28.65 x 6.3 x 10.5

## Compliances and Standards:

The performance of the attenuator has been carefully designed to meet the toughest Telcordia standards

- GR-326-CORE
- RoHS-Compliance of item and package
- Performance according to IEC

## WARRANTY

1-year limited warranty

