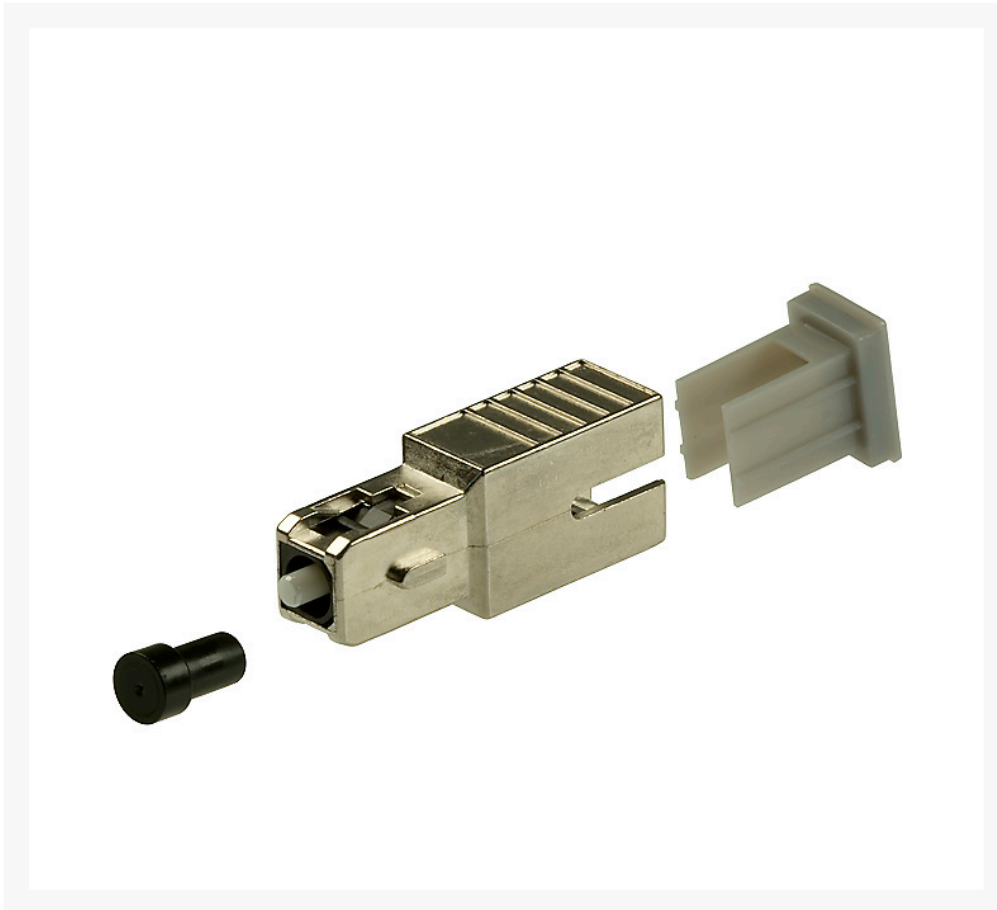




SC SM M to F/M Attenuator 5dB

Product Images



Description

SC SM M to F/M Attenuator 5dB

Our SC fiber optic attenuator can provide a stable attenuation from 1 to 20dB at both 1310nm and 1550nm transmission windows. The plug type of this attenuator is male-to-female. Our SC fiber optic attenuator features excellent performance and is compliant with IEC 60869-1 and is fully compatible with all SC/UPC connectors and adaptors.

Specifications:

- Characteristics : Single-mode (9/125 μ m)
- Operating Wavelength : 860, 1310nm, 1550nm
- Return loss (UPC) : \geq 55dB
- Attenuation Accuracy : \pm 0.5dB
- Operating Temperature : -20 - +75°C
- Storage Temperature : -40 - +75°C
- Mating Durability : \geq 1000 cycle
- Body Dimension(mm) L x W x H : 28.65 x 6.3 x 10.5

Compliances and Standards:

The performance of the attenuator has been carefully designed to meet the toughest Telcordia standards

- GR-326-CORE
- RoHS-Compliance of item and package
- Performance according to IEC

WARRANTY

1-year limited warranty

