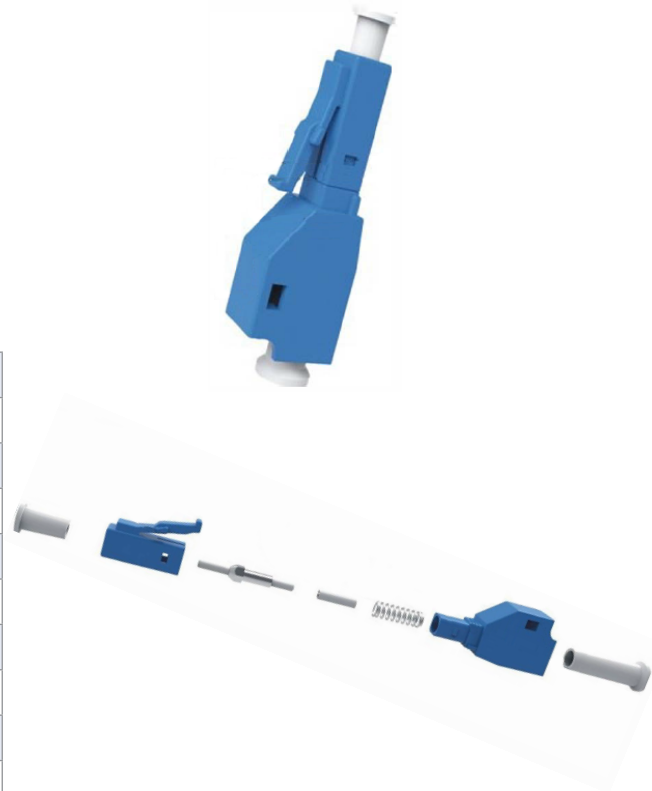


Product Overview

Our LC fiber optic attenuators can provide a stable attenuation from 1 to 20dB at both 1310nm and 1550nm transmission windows. The plug type of this attenuator is male-to-female. Our LC fiber optic attenuator features excellent performance and is compliant with IEC 60869-1 and is fully compatible with all LC/UPC connectors and adaptors.

Specifications:

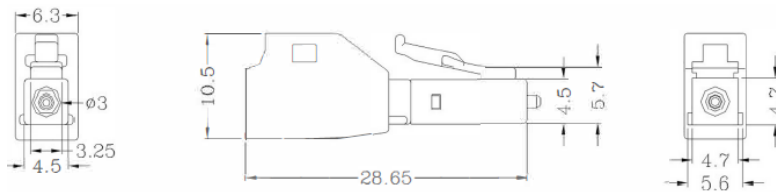
Characteristics	Single mode(9/125μm)
Attenuator Range	1-20dB
Operating Wavelength	860, 1310nm, 1550nm
Return loss (UPC)	≥ 55dB
Attenuation Accuracy 015.003.0003	± 0.5dB
Attenuation Accuracy 015.003.0002	± 10%dB
Attenuation Accuracy 015.003.0001	± 0.75dB
Operating Temperature	-20 - +75°C
Storage Temperature	-40 - +75°C
Mating Durability	≥ 1000 cycle
Body Dimension(mm) L x W x H	28.65 x 6.3 x 10.5



Materials:

Item	Material
Dust CAP-1	PP
Dust CAP-2	PP
Housing-1	PEI
Spring	SUS304
Ferrule	ZrO2
Housing-2	PC
LC-Ferrule	ZrO2

Mechanical Diagram (mm):



Compliances and Standards:

The performance of the attenuator has been carefully designed to meet the toughest Telcordia standards

- GR-326-CORE
- RoHS-Compliance of item and package
- Performance according to IEC



Test procedure:

- Optical Characteristics
- Vibration Test
- Thermal Cycling
- Impact Resistance
- Thermal Aging
- Humidity Resistance
- Others

Available models:

SKU	Description
015.003.0003	LC SM M to F/M Attenuator 5dB
015.003.0001	LC SM M to F/M Attenuator 10dB
015.003.0002	LC SM M to F/M Attenuator 15dB



GITC APPROVED

CONNECT & COLLECT LOCATIONS

17/31 Maddox Street
Alexandria NSW 2015

17/428 Old Geelong Road
Hoppers Crossing VIC 3029

12/58 Metroplex Ave
Murarrie QLD 4172

1/9 Collingwood Street
Osborne Park WA 6017