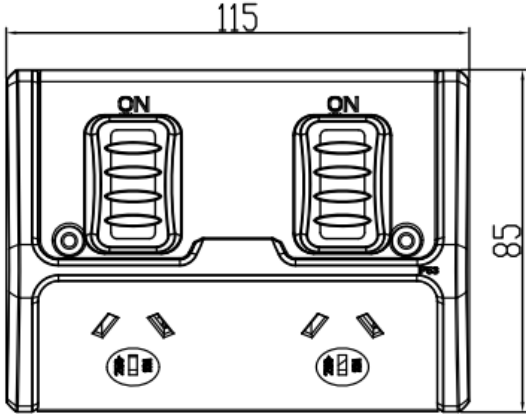


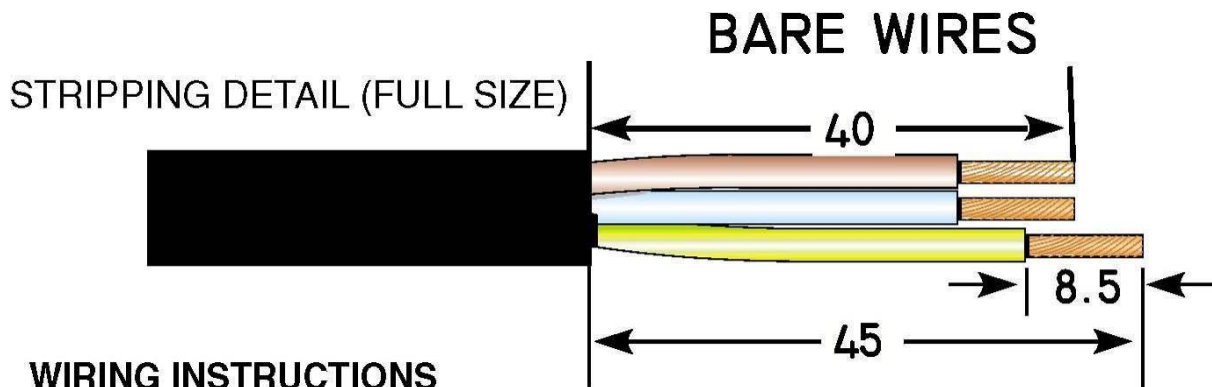
PRODUCT / RANGE:	4Cabling Industrial Weatherproof Power Points	
Models	040.000.0223 040.000.0224	
Measurements	115 x 85 x 85 mm	
Type	W/P power point	
Operating Voltage / Rating Current	040.000.0223 250V 10A 50Hz (Single) 040.000.0224 250V 10A 50Hz (Double)	
Usage	Industrial areas subject to wash-down; outside	
IP Rating	IP53	

NOTES

- Double check all terminal screws are tight and wires are fitted to the correct terminals, as marked on the product.
- Ensure the cable clamp screw is sufficiently tightened so that the cable clamp firmly grips the outer sheathing of the flexible cord.
- Ensure all screws are tightened fully and seals are in place to maintain IP rating.
- The plug must be fully inserted into a suitable socket-outlet to maintain its IP Rating.

ASSEMBLY STEPS

1. Strip insulation as illustrated and twist the bare conductor strands.
2. Open the switched socket.
3. Connect the earth wire (green/yellow or green) to the terminal marked 'E'.



4. Connect the active (live) wire (brown or red) to the terminal marked 'A'.
5. Connect the neutral wire (blue or black) to the terminal marked 'N'.
6. Tighten cord clamp around the outer sheath of flexible cord.
7. Check the wires are in their correct position as illustrated and the terminal screws are tight.
8. Get the cover to fit the base and make sure the screws are fully tightened.

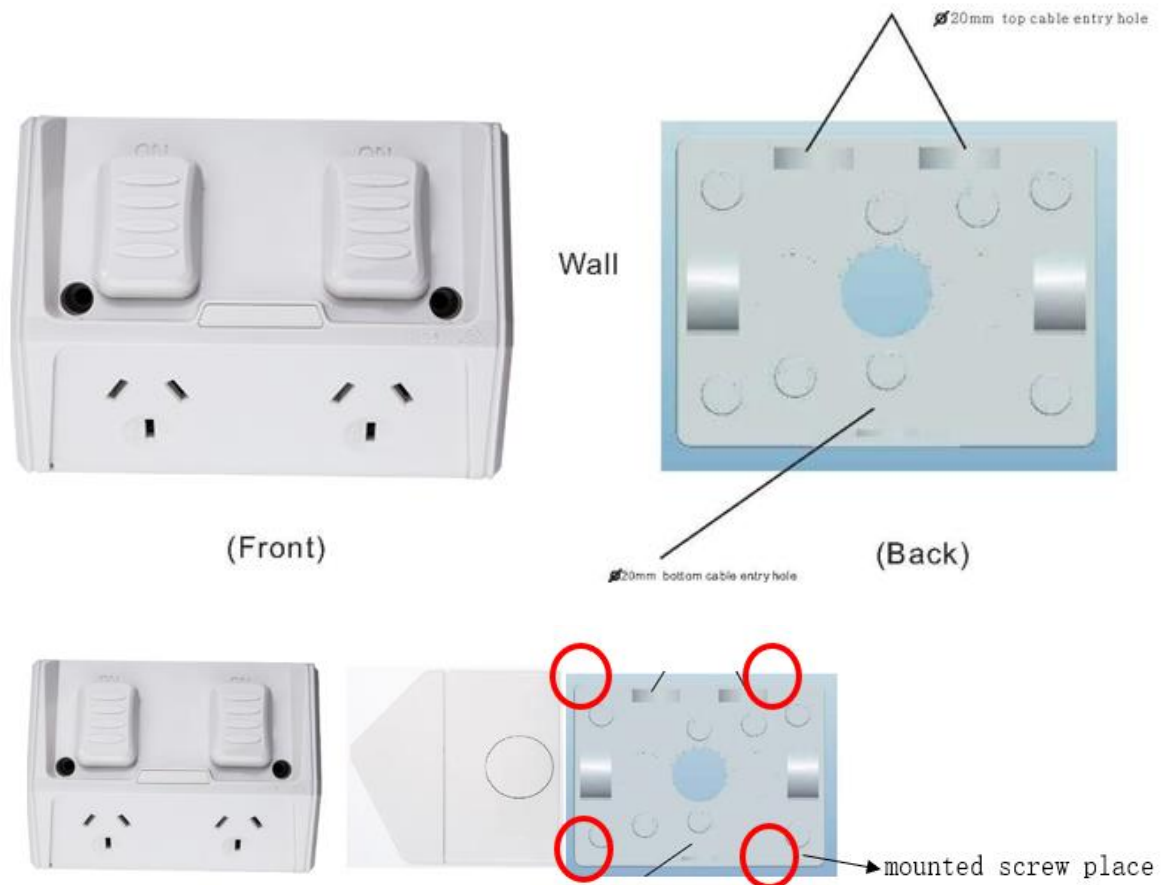
INSTALLATION

1. To maintain its IP rating, this product should be installed vertically against the wall (switch parts up; the outlet socket down). The entry plug should be sealed properly by glue.
2. The end-user can connect incoming and outgoing wiring, as per the below image.



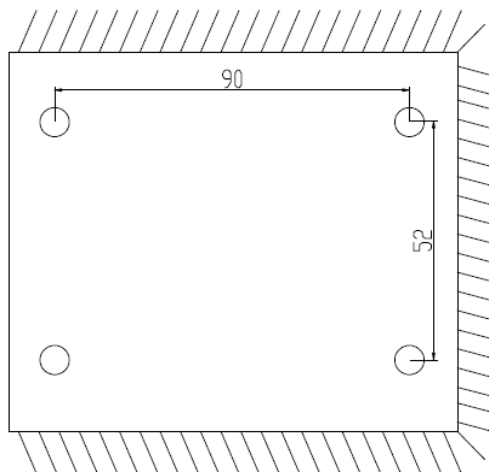
3. There are two options: shallow base and recess mounted.

3.1. See below the shallow base option. There are two types of shallow base box.

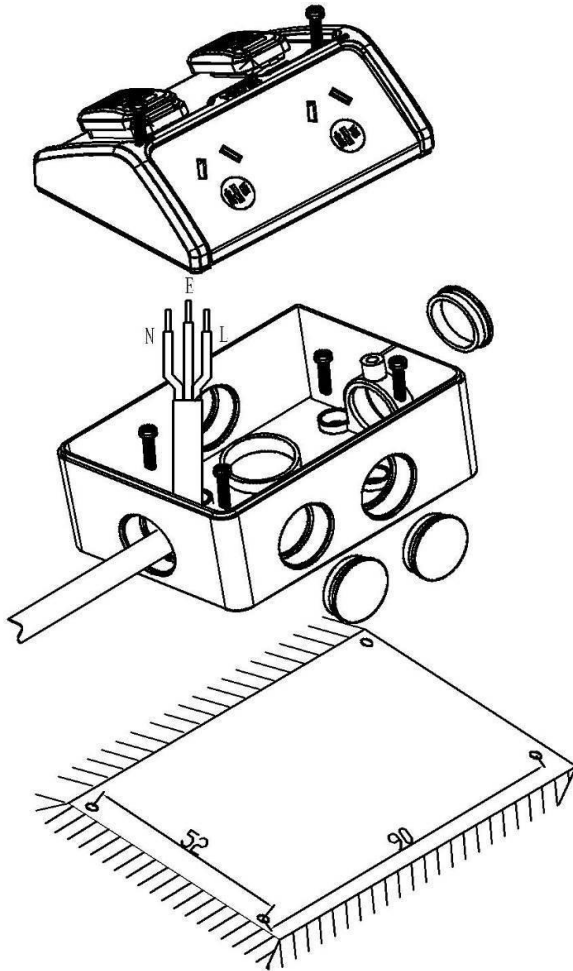


a) One is surface mounted.

Drill four mounting holes on the wall, as detailed in the diagram below, and secure the correct anchor.



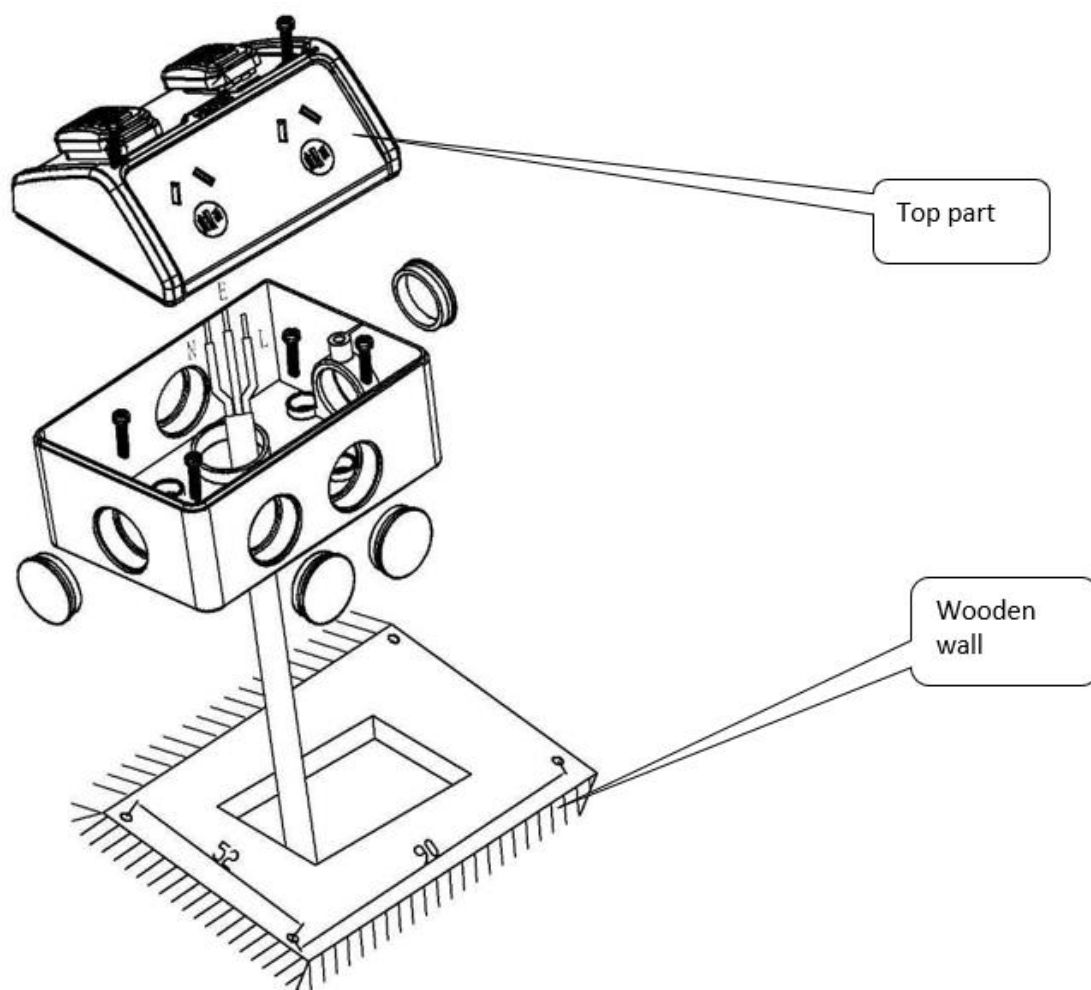
- b) Use four self-drive screws to mount the base box on the wall, then plug the screw caps on the screws. Assemble the top and screw tightly. Make sure the seal is in place, then glue the base box firmly. Repeat these steps for the rest.



3.2 For the recess mounted option, assemble on the wall, fix the cover, and then glue the edges in place. For wiring, refer to the previous instructions.



- a) Assemble onto the wall as above; most suitable to wood walls.
- b) Cut one hole into the wall (76x52x35mm).
- c) Push the shallow base box into the hole.
- d) Use the screw (6-32x51mm) to fix the base box to the wood wall. Ensure the seal between the cover and base box is in place.
- e) If the wall has the standard flush box already, use the long screw (6-32x51mm) to fix the base box with the flush box. Ensure the seal between the cover and base box is in place.
- f) Glue the base box edges.



Please note: for mounting single weatherproof power points and double weatherproof power points you need to follow the same steps.

Disclaimers:

- This product must be installed by a licensed electrician.
- Avoid direct product contact with corrosive liquids and gases, such as alkaline, acid, and paint, as these will cause damage to the product.
- This product cannot be repaired; do not attempt to repair this product. If the product is faulty, it should be disposed of safely.
- This product should not be disposed of with household waste. Please recycle where facilities exist. Check with your local authority or retailer for recycling advice.
- The material of this product may vary in colour from batch to batch. Colour matching from one batch to another cannot be guaranteed.
- Electrical installations periodically receive transient over voltages; this product has been designed to minimise the effect of such voltages on the connected equipment. However, please note that this product may not give full protection for extreme overvoltage transients, such as those resulting from a close lightning strike.
- Cable wiring of different voltage systems, such as Low Voltage and SELV cables, cannot share the same conduit.
- This product must be installed and used as per these instructions.
- This product utilises intellectual property in the form of registered designs, trademarks, and/or patents. Such intellectual property remains the property of 4Cabling in all cases.
- 4Cabling reserves the right to modify the specification of this product at any time.